



Expert Waste Management Equipment  
Supplier

Expert Garbage Chute & Linen Chute  
Supplier

INNOVATION

QUALITY

SERVICE

## About Us



We have been in chute business for near ten years. As one of the leading manufacturing companies of waste management products. We are always in the position to supply our clients with high quality, steady quantity, and delivery on time and competitive prices. We have obtained ISO 9001 quality certification and gotten UL 10B fire-rated certificate.

We proudly makes all of our own trash chute, laundry chute, pneumatic waste chute, construction chute, Compactor and other products.





## About Us

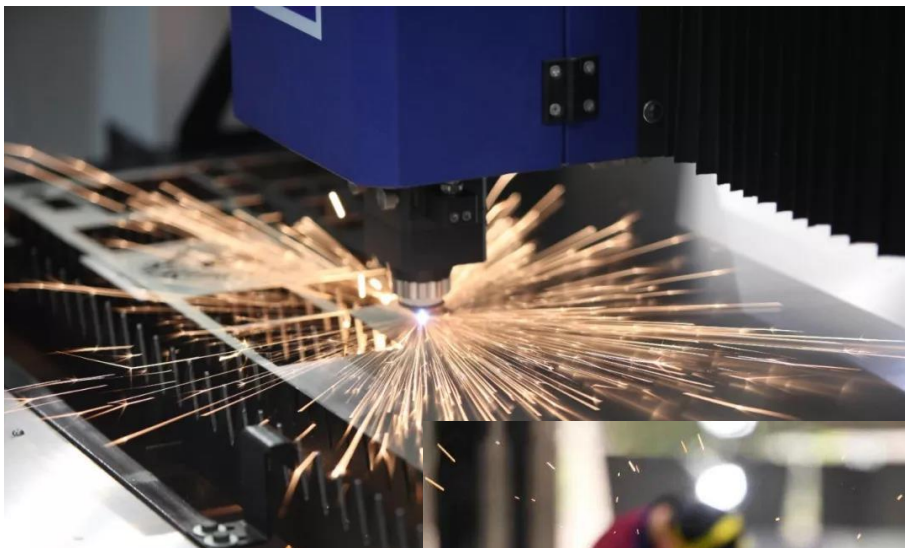


Our metal fabrication department is experienced with many materials, such as stainless steel, galvanized steel, and aluminum sheet fabrication.

Laser cutting, sheet metal, Welding, surface treatment and structural metal are all our strengths. The 10 years-experienced craftsman in our workshop can ensure that we can supply you with products of guaranteed quality.

Our excellent design team can fully support you from design, to production, to shop drawing, and to installation. As one of our necessary service content, we require our design team to make a 3D drawing in the same proportion per the actual site of each project, so as to intuitively find any problems during the future installation process, and then avoid the occurrence of installation inconformity when we do not visit the site.

Our after-sales department is always on call and can come to your site at any time to give you installation guidance, after-sales service, or video guidance. In our warehouse, you will find plenty of accessories to fit your different types of doors and we promise to stock enough accessories for ten years after selling the chutes products.



# About Us

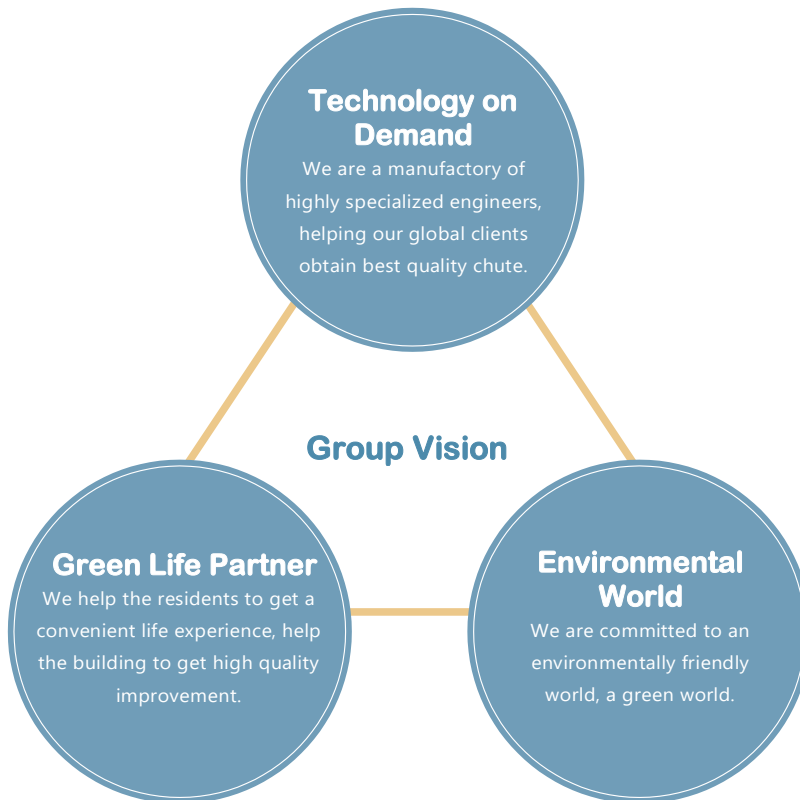


Product distribution and technical assistance are handled by agency in abroad: these are in daily contact with the market and provide a comprehensive before/after-sales service. Product quality and an efficient sales organization are the cornerstones on which QDCE has based its reputation. These qualities enable the company to meet all possible requirements in terms of chute products.

Intensifying global competition means that power relationships in industrial circles are shifting rapidly. Along with this, China's industrial structure is faced with the need to transform significantly. Our role is to keep up with China's ever-changing industry and capture client needs,

so as to be the fastest in our industry at providing clients with the best technical services.

The vision of QDCE is to provide clients with high-quality products that surpass their expectations, and consequently contribute to a better society for our clients and other stakeholders as well as the public. We will continue our drive to realize this vision.



## Products Service

01-Garbage Chute

02-Laundry Chute

03-Construction Chute

04-Compactor

05-Machine Related To Chute





# 01-Garbage Chute & Laundry Chute

## 01-Garbage Chute & Laundry Chute

QDCE Trash, Linen and Recycling Chutes are designed to provide a clean and efficient method of removing waste and soiled linens from upper floors to a centrally located discharge area on a lower floor. It is a very convenient, simple and low cost method of controlling and disposing of refuse and linen in multi-storey buildings.

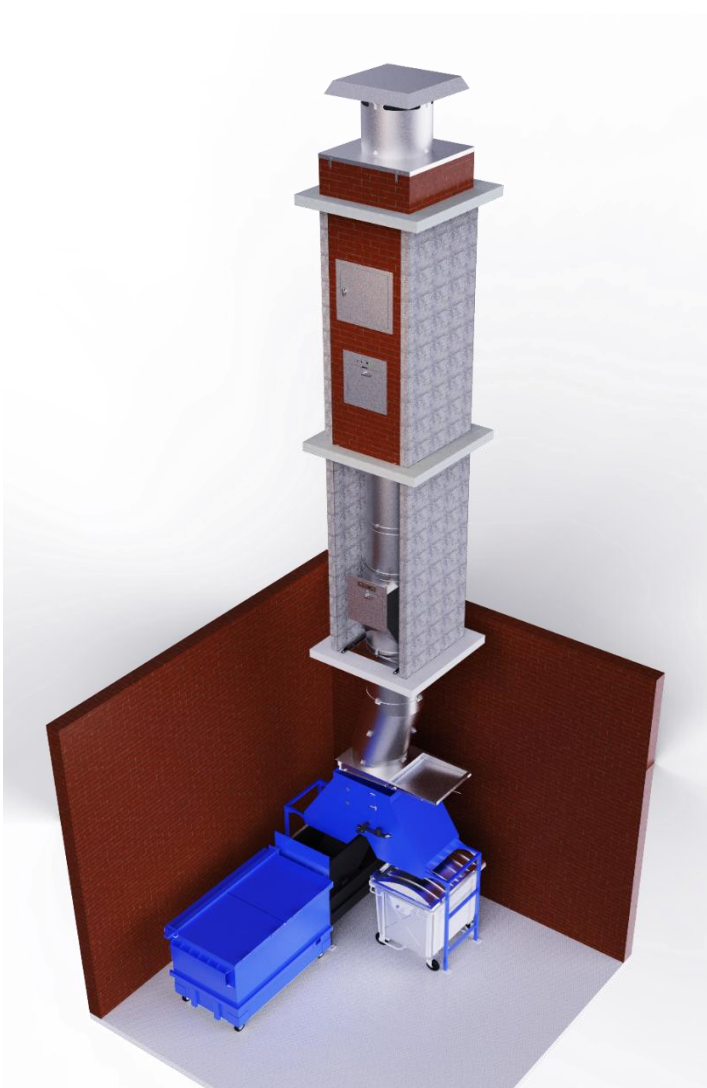
Our chutes meet the most stringent requirements of environmental health and safety.

The components of chute has interlocking system, cleaning system, sanitizing and disinfecting units, sound dampening and fire control equipment. Within the overall design of chutes have greatly increased their usage throughout the world.



The components of chute includes:

- Ventilation System
- Brush Cleaning System
- Sanitizing and disinfecting units
- Straight Chute Section & Intake Chute Section
- Supporting Frame
- Sound Dampening System
- Intake Door(1.5 Hours UL Fire-Rated Certificated)
- Interlocking System
- Recycle chute system
- LCD Main Control Panel
- Sprinklers & Flushing System
- Fire Control System
- Offset Chute(Elbow Chute)
- Discharge Door(Fire Cutoff Door) or Electrical Automatic Cutoff Door
- Compactor
- Bi-Sorter/Tri-sorter(can be customized per your site)
- Other Parts



# 01-Garbage Chute & Laundry Chute

## Material Specification

We provides garbage chutes and laundry chutes to customer requirements from the following high quality materials: Stainless Steel 304, Stainless Steel 316, Galvanized Steel, Aluminum-coated steel, or per customer's request.

We strongly recommends the use of stainless steel 304, 316 for the manufacture of garbage chutes and linen chute. Stainless steel has the advantage of being resistant to the humidity, acid and alkalis contained within refuse. Stainless steel has no applied coating to wear off and most important has very high impact strength.

The following material thickness can be available:

- 1.2mm (18 Gauge)
- 1.5mm (16 Gauge)
- 2.0mm (14 Gauge)
- 3.0mm (11 Gauge)

1.5 mm thickness material is recommended for your buildings. In addition, this thickness takes into account both cost and performance.

Stainless Steel-2B finish  
(Chute Section)



Door Finish-Wire Drawing



Door Finish-Sand Blasting



Door Finish-Sand Blasting



# 01-Garbage Chute & Laundry Chute

## Chute Specification

Our chutes are available with the following standard internal diameters:

- 14"=350mm
- 18"=450mm
- 20"=500mm
- 24"=600mm
- 28"=700mm
- 30"=750mm
- 32"=800mm
- 36"=900mm
- 40"=1000mm

Chutes are available in various diameters; We will also manufacture per customer's drawings and customers special requirements.

However, the NFPA (National Fire Protection Agency) requires a minimum diameter of 24 inches (600mm).



# 01-Garbage Chute & Laundry Chute

## Chute System's Components

### ▼ REGULAR CHUTE SECTION



- Cut to shape from flat metal sheet, mechanical rolled into an accurate cylindrical.
- Vertical seams are welded to give smooth, watertight sealed joints.
- The entire inner surface area is smooth and free from any projections that will impede the free flow of refuse within the total vertical length of the chute.
- Beading Ribs will be shaped to strengthen it and improve the sealing.
- Sound dampening coating to reduce the sound transmission and vibration.

### ▼ INTAKE CHUTE SECTION



- Has an opening on each floor with throat for throwing the garbage. The opening of the throat shall be compatible to the chute door.
- The entire inner surface area is smooth and free from any projections that will impede the free flow of refuse within the total vertical length of the chute.
- Beading Ribs will be shaped to strengthen it and improve the sealing.
- Sound dampening coating to reduce the sound transmission and vibration.
- Throat are full welded and polished.

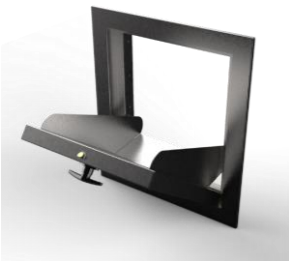
# 01-Garbage Chute & Laundry Chute

## ▼ OFFSET CHUTE



- Double bends, 3.0mm thickness, more impact-resistant and wear-resistant.
- 4' length centerline or longer lengths can be customized per work site.
- Sound dampening coating to reduce the sound transmission and vibration.
- 15 degree, 30 degree, 45 degree per work site.
- With four support clips on top, two on the middle and four at the bottom for connection to clip supports

## ▼ INTAKE DOOR



Bottom Hinged Door



Side Hinged Door

- Bottom Hinged or Left Hinged or Right Hinged.
- Hand-operated, self-closing, positive latching.
- UL fire rated 1-1/2 hour, 30 minute – 250 degree max temperature rise.
- Handle can be T-handle, L-handle (ADA compliant), Pulling handle, Thumb Trigger.
- Latch can be Tubular Latch or Square Latch.
- For Door panel surface, Wire Drawing, Mirror and Bronze can be choose.
- The whole door panel and the frame are made with 304 stainless steel, 1.5mm thickness. All the parts can be completely disassembled while mounted in the wall allowing every part to be cleaned, serviced or replaced with ease.
- Stainless Steel Frame is available blank or embossed with "Rubbish", "Soiled Linen", or "Recycle".
- Intumescent Strip to fire rated and sound dampening.
- Other accessories available include rubber baffle or steel baffle, electrical interlocks, key locks and more. Can be retrofitted to others chutes with sheet metal throat and wall modifications to fit chute door openings for doors of the same size.
- Complies with building codes, NFPA-82 and ASTM standards.

# 01-Garbage Chute & Laundry Chute

## ▼ INTAKE DOOR SIZE

Chute intake doors are available in different sizes but commonly used ones are:

Intake Door Size		
Chute Dia.	Garbage Chute	Linen Chute
	Bottom Hinged Doors(W*H)	Side Hinged Doors(W*H)
18"(450mm)	12"*15"(305mm*381mm)	15"*15"(381mm*381mm)
20"(500mm)	12"*15"(305mm*381mm)	18"*18"(457mm*457mm)
24"(600MM)	15"*18"(381mm*457mm)	18"*18"(457mm*457mm)
	18"*18"(457mm*457mm)	21"*21"(533mm*533mm)
28"(700mm)	18"*18"(457mm*457mm)	21"*21"(533mm*533mm)
30"(750mm)	21"*18"(533mm*457mm)	24"*24"(610mm*610mm)
36"(900mm)	24"*24"(610mm*610mm)	24"*24"(610mm*610mm)
Available Door sizes		
400mm*500mm	12"*12"(305mm*305mm)	12"*15"(305mm*381mm)
400mm*600mm	15"*15"(381mm*381mm)	15"*18"(381mm*457mm)
450mm*450mm	18"*18"(457mm*457mm)	18"*18"(457mm*457mm)
500mm*500mm	21"*18"(533mm*457mm)	21"*21"(533mm*533mm)
600mm*600mm	24"*24"(610mm*610mm)	24"*24"(610mm*610mm)

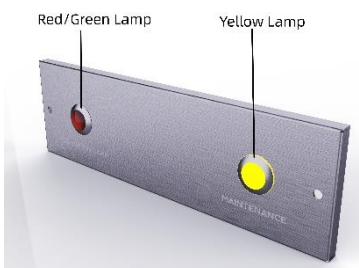


## ▼ INTERLOCKING SYSTEM & SORTER SYSTEM

We have two kinds of interlocking system, one is safe-type, another is secure-type.

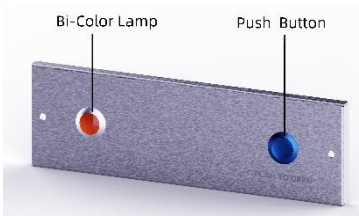
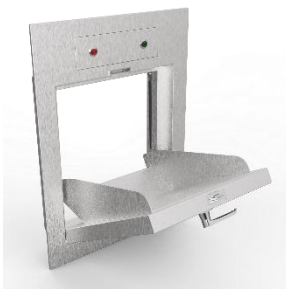
### 1. Safe-type

There is one red pilot lamp one green pilot lamp and one yellow pilot lamp on the door frame. Through the change of lamp color, to show the various states of the interlocking door.



- When all floor door are ready for operating, all doors' green lamp will be lit.
- When someone want to open one door, **he can pull the door open directly**, then the interlocking is activated, the other doors will be locked, meanwhile, all doors' red lamp will be lit.
- We should make a cleaning, disinfection and maintenance work for the chute system periodically. The yellow lamp will be lit during these work.
- The below works will activate the interlocking function:
  - Cleaning process
  - Disinfection process
  - Maintenance
  - Emergency button
  - Fire Alarm
  - Brushing cleaning process (Optional)
  - Bin replacing and Bin full (Optional)
  - Smoke detector is activated (Optional)
- The interlock system is pre-wired and is designed to be plugged into a 120V or 220V receptacle and stepped down to 24VDC located in main control panel.

# 01-Garbage Chute & Laundry Chute



## 2. Secure-type

There is one red pilot lamp one green pilot lamp and one push button on the door frame. Through the change of lamp color, to show the various states of the interlocking door.

- When all floor door are ready for operating, all doors' green lamp will be lit.
- When someone want to open one door, he should press the **button firstly**, then the interlocking is activated, the other doors will be locked, then he can pull the door open, meanwhile, all doors' red lamp will be lit.
- We should make a cleaning, disinfection and maintenance work for the chute system periodically. The red lamp will be lit during these works.
  - The below works will activate the interlocking function:
    - Cleaning process
    - Disinfection process
    - Maintenance
    - Emergency button
    - Fire Alarm
    - Brushing cleaning process (Optional)
    - Bin replacing and Bin full (Optional)
    - Smoke detector is activated (Optional)
- The interlock system is pre-wired and is designed to be plugged into a 120V or 220V receptacle and stepped down to 24VDC located in main control panel.

# 01-Garbage Chute & Laundry Chute

## ▼ SAFE-TYPE INTERLOCKING'S GENERAL WORKFLOW

--All electromagnetic locks is POWER OFF and open mechanically.  
 --Each door can pull open directly  
 --Green lamp lit.



--One user pull a door open.



### INTERLOCKING FUNCTION ACTIVATED

--The other Electromagnetic locks is POWER ON and closed mechanically.  
 --All doors' red lamp lit.

The below operation can activate interlocking:

- Cleaning process
- Disinfection process
- Maintenance
- Emergency button
- Fire Alarm
- Brushing cleaning process (Optional)
- Bin replacing and Bin full (Optional)
- Smoke detector activated (Optional)

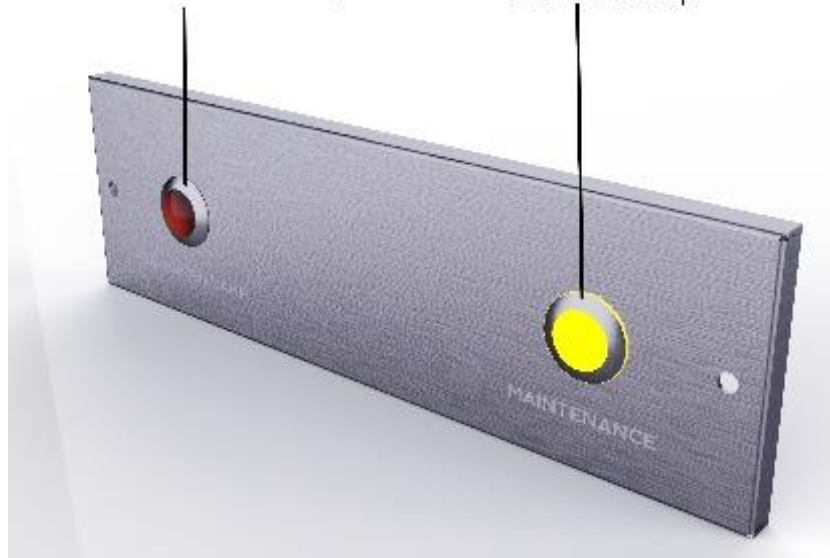


### INTERLOCKING FUNCTION ACTIVATED

--The other Electromagnetic locks is POWER ON and closed mechanically.  
 --All doors' red lamp lit.

Red/Green Lamp

Yellow Lamp





# 01-Garbage Chute & Laundry Chute

## ▼ SECURE-TYPE INTERLOCKING'S GENERAL WORKFLOW

--All electromagnetic locks is POWER OFF and MECHANICALLY CLOSED.  
 --Each door can NOT pull open directly  
 --Green lamp lit.

--One user PRESS a button firstly.

--This door is energized and ready for opening.  
 --All doors' red lamp lit.

--Then user pull the door open.

### INTERLOCKING FUNCTION ACTIVATED

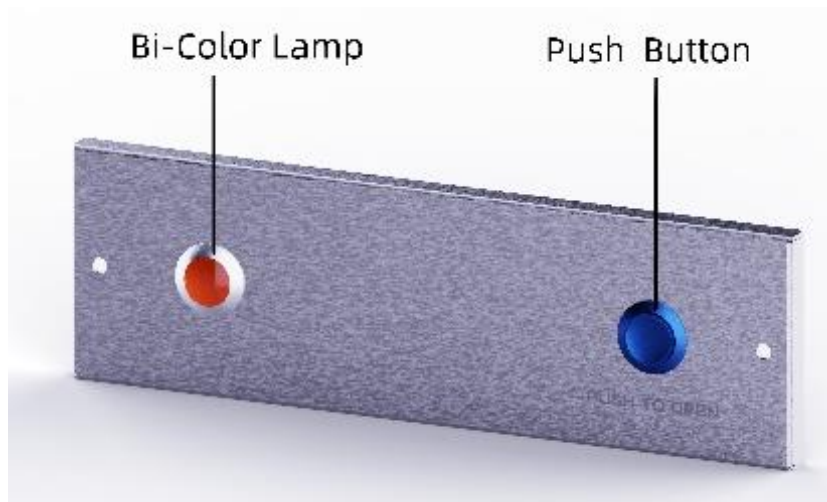
--The other Electromagnetic locks is STILL POWER OFF and closed mechanically.

The below operation can activate interlocking:

- Cleaning process
- Disinfection process
- Maintenance
- Emergency button
- Fire Alarm
- Brushing cleaning process (Optional)
- Bin replacing and Bin full (Optional)
- Smoke detector activated (Optional)

### INTERLOCKING FUNCTION ACTIVATED

--All Electromagnetic locks is STILL POWER OFF and closed mechanically.  
 --All doors' red lamp lit.



# 01-Garbage Chute & Laundry Chute

## ▼ THE PROS AND CONS OF THESE TWO INTERLOCKING SYSTEM

Comparison of advantages and disadvantages of two interlocking. Customer can choose which one is suitable for their buildings.

Safe-type Interlocking System		Secure-type Interlocking System	
Advantage	In the normal state, The door is NOT mechanically locked, and users can <b>pull the door open in one-step</b> , which is very convenient.	Disadvantage	In the normal state, The door is mechanically locked, and users should <b>press a button firstly</b> , then he can pull the door open.
Disadvantage	When the interlock is activated, the electromagnetic locks of all doors need to be energized for a long time to maintain the interlocking state. A long time of energized will easily cause the electromagnetic locks to overheat and thus be damaged	Advantage	When the interlock activated, no electromagnetic locks need to be energized, so electromagnetic locks get a longer service time.
Disadvantage	According to the building regulations, in case of fire, the building needs to be powered off. For this interlocking system, the power off means that it can NOT be started, therefore all the doors can be opened at will. If an unwitting resident opens the door and throws garbage, the fire or smoke can easily spread to the floor through the opening door. <b>SO, THIS INTERLOCKING SYSTEM DON'T COMPLY WITH FIRE CODE.</b>	Advantage	According to the building regulations, in case of fire, the building needs to be powered off. For this interlocking system, the power off means that it can be started, therefore all the doors can NOT be opened at will. <b>SO, THIS INTERLOCKING SYSTEM COMPLY WITH FIRE CODE.</b>
Disadvantage	In case of emergency, such as fire, blockage, personal injury, current leakage, Start interlocking look unfriendly.	Advantage	In case of emergency, such as fire, blockage, personal injury, current leakage, Start interlocking look unfriendly.
Popular Area	Middle East.	Popular Area	USA, Canada, European, Southeast Asia, South America, Africa.

# 01-Garbage Chute & Laundry Chute

## ▼SORTER SYSTEM



Sorter is designed to provide a clean and efficient method of automatically sorting materials from your waste chute into a chute-fed compactor or rubbish collection bin.

There are two types: Bi-Sorter & Tri-Sorter.

The Bi-Sorter system allows trash (garbage) and recycling (cans/plastic/glass) to be collected in waste containers, or an optional QDCE trash compactor, respectively. The Tri-Sorter is the same but allows for one additional recycling separation, depending on the needs of the building. Both systems are comprised of a single trash chute with door panels that are interlocked, permitting only one door and one stream to be functional at a time. The Bi-Sorter/Tri-Sorter equipment and compactor/bins are located in the basement at the bottom of the chute.

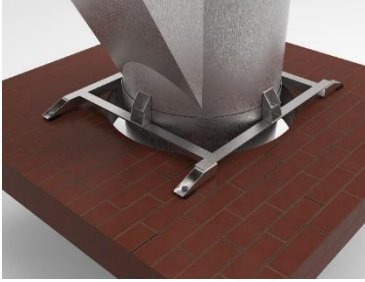
**There is a membrane keypad button on each door. Through it, Users can select different buttons to choose different types of garbage, and the above pilot LED lamp can display various status.**

- The tenants select which type of material will be discarded and push the right button, and the Recycling System diverts the waste accordingly to the designated receptacle or compactor. Remaining chute intake doors on other floors shall be disabled during the operation.
- The below works will activate the interlocking function:
  - Cleaning process
  - Disinfection process
  - Maintenance
  - Emergency button
  - Fire Alarm
  - Brushing cleaning process (Optional)
  - Bin replacing and Bin full (Optional)
  - Smoke detector is activated (Optional)
- The sorter system is pre-wired and is designed to be plugged into a 120V or 220V receptacle and stepped down to 24VDC located in main control panel.



# 01-Garbage Chute & Laundry Chute

## ▼ SUPPORT FRAME



- 40mmx40mmx5mm angle steel.
- Hot dip galvanized and more rustproof.
- With holes to connect with chute section.
- Rigid and full welded construction.
- Customize different shape per building structure.
- Isolator Pad and Expansion Bolts should be attached.

## ▼ DISCHARGE DOOR

Installed on the bottom of the chute, and held open by a 165°F (74°C) fusible link (UL listed). It will cut off and close the chute once fire happened in the garbage collection room and the link is melted when the ambient temperature of a fire reaches 165 °F.

There are two types of discharge door:

### 1. Rolling Incline Type Discharge Door

- The door panel is made of 3.0mm SS steel with a 1.5mm frame.
- Door has an all welded door and frame with a collar to fit an 18" to 36" round chute.
- This discharge door is available for square or round chutes in the standard sizes of 18" to 36".
- Fusible link, chain, wheels, and door panel are replaceable.
- Monthly inspections of the discharge should be made to ensure that the link is intact and that no waste has collected in the horizontal tracks of the discharge, which might interfere with its closing path.
- Discharge door is not designed to be used to shut off the chute.



# 01-Garbage Chute & Laundry Chute



## 2. Hopper Type Discharge Door

- The hopper type discharge is typically used on laundry chutes.
- The discharge is top hinged and held open by chains with a 165°F fusible link(UL listed).
- The hopper type discharge can also extend into the discharge room from the ceiling and is supported on a pedestal(s).
- The door panel and frame is made of 3.0mm SS steel with a 1.5mm frame.
- Door has an all welded door and frame with a collar to fit an 18" to 36" round chute.
- This discharge door is available for square or round chutes in the standard sizes of 18" to 36".
- Include hopper body, doorframe, door panel, pedestals, fusible link, chains, shackle, expansion bolt, slam latch, night latch, etc.
- Monthly inspections of the discharge should be made to ensure that the link is intact , the hopper discharge is kept clean, free of damage caused from service impact, shall remain open at all times. It is not intended to be used as a 'shut off' door when carts are changed, etc.

# 01-Garbage Chute & Laundry Chute

## ▼ MAIN CONTROL PANEL



- With necessary button and indicators:
  - D&S Unit,
  - Cleaning System,
  - Fan,
  - Maintenance,
  - Emergency,
  - Key Lock Switch,
  - Brushing System (Optional per request),
- With a Warning Alarm Light, and it will flash and alarm when some function is not working properly
- Fire alarm integration with BMS.
- With a display LCD(Optional per request), which can show each operation's status. Such as all status of each floor.
- Integrated with compactor system and sorter system (Optional per request).
- The main control panel is pre-wired and is designed to be plugged into a 120V or 220V receptacle and stepped down to 24VDC located in main control panel.



# 01-Garbage Chute & Laundry Chute

## Functions List of Chute Electrical System

No.	Function List And Description		Yes/Not
1	<b>Interlocking system</b>	Basic	✓
	One door open, the other door will be locked.		
2	<b>Disinfection &amp; Sanitizing System, controlled by main control panel</b>	Basic	✓
	D&S unit is located at the top center position of your chute system, When activated, the water mixed with the disinfectant sprays the inside of the chute for 20 minutes.		
	<b>Automatic-Disinfection &amp; Sanitizing System</b>	Optional	✗
	Pre-set the cycle and run time, it can run automatically. In addition, It can be controlled by pushing button of main control panel.		
3	<b>Cleaning Function, controlled by main control panel</b>	Basic	✓
	1/2", will be fixed in the throat on each floor, and has a 145-degree spray angle to spray into the trash chute only, not against intake doors.		
	<b>Automatic-Cleaning Function</b>	Optional	✗
	Pre-set the cycle and run time, it can run automatically. Also It can be controlled by pushing button of main control panel.		
4	<b>Booster Pump</b>	Optional	✗
	To increase the water pressure		
5	<b>Fan</b>	Basic	✓
	The stench is continuously driven away from the chute.		
6	<b>Automatic-Fan</b>	Optional	✗
	Pre-set the cycle and run time, it can run automatically. In addition, It can be controlled by pushing button of main control panel.		

## 01-Garbage Chute & Laundry Chute

7	<b>Bi-sorter</b>	Optional	✘
	There is a membrane keypad button on each door, the tenants select which type of material will be discarded and push the right button, and the Recycling System diverts the waste accordingly to the designated receptacle or compactor. Remaining chute intake doors on other floors shall be disabled during the operation.		
8	<b>Chute fed Compactor</b>	Optional	✘
	Trash bag go into the compactor, and it will automatically push these bags into one container.		
9	<b>Smoke &amp; heater detector</b>	Optional	✘
	When smoke is sensed or the ambient temperature reaches the set value, the signal will be sent to the main control panel, and then the interlocking function will be activated.		
10	<b>Automatic Cut-off Door(Discharge Door), Integrate with Heat and Smoke Detector System</b>	Optional	✘
	Must be used with Smoke Detector System When smoke is sensed or the ambient temperature reaches the set value, the signal will be sent to the main control panel, and then the discharge door will be closed automatically. Meanwhile, the interlocking function will be activated.		
11	<b>Bin detection system</b>	Optional	✘
	This system can be installed around the dustbins and it contains two detecting systems, one can detect the dustbin full situation, another one can detect dustbin replacing.		
12	<b>Brushing cleaning system</b>	Optional	✘
	The brush system is fixed in the topmost of the chute to start brushing the chute internal wall during washing time, along with water and chemicals automatically.		

# 01-Garbage Chute & Laundry Chute

## ▼ ACCESS DOOR



The Access Door is located above the top intake of the chute, allows access to the valves that operate the flushing spray head and/or sanitizing unit.

- The access door is 450mm\*450mm, or 600mm\*600mm.
- T-handle, Side Hinged, hand-operated, self-closing, positive latching.
- The whole door panel and the frame are made of 304 stainless steel, 1.5mm thickness.
- UL fire rated 1-1/2 hour, 30 minute – 250-degree max temperature rise.
- Intumescent strip to fire rated and sound dampening.

## ▼ VENT ASSEMBLY



The purpose of a vent is to dissipate odors, as well as to dissipate hot gases in the event of a fire within the chute.

NFPA codes require a full diameter vent, penetrating and extending 3' above the roof.

- Made of 304 stainless steel, 1.5mm thickness. To better resist the external elements
- Include Weather Cap, Riser, Bird & Inset Screen, Flashing Cover and Exhaust Fan and more.
- Glass wool filled into the curb.

# 02-Compactor

## 02-Compactor

The Apartment Compactor is the Ideal Solution For:

- Small Apartment Buildings
- Hospitals
- Nursing Homes
- High-Rise Chute Rooms

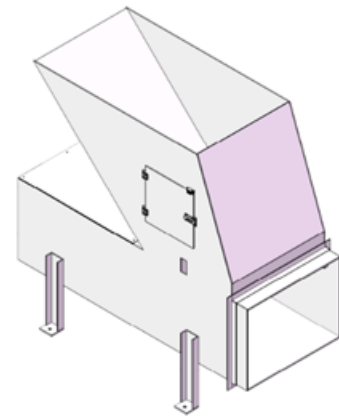
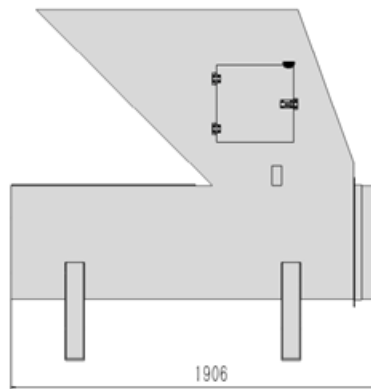
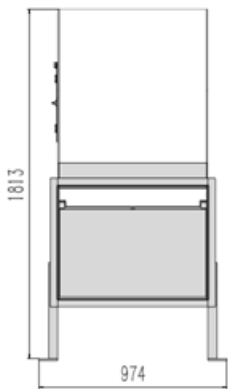
Solid waste in your building has been brought down to street level with a dedicated waste chute and the compactor.

Standard Features and Benefits:

- 4:1 compaction ratio over un-compacted waste receptacles.
- Convenient single side ratchet.
- Push button controls mounted in the panel box face.
- Hopper with access door and interlock for hand feed or chute feed applications.
- Full container light.
- Limited Space Applications - Compactor and container system can be easily operated in a 16' x 8' room.
- Automatic photo-eye start system – compactor cycles automatically when the chamber is full.
- Large waste chute transition hopper standard. Allows for garbage to “hit” the spot with less mess around the compactor.
- Reduce hauling costs - compacted wastes means fewer pickups.



# 02-Compactor



## Charge Box Specifications

Wastequip Rating	0.33 cubic yards
Charge Box W	30"
Charge Box L	22.5"

## Ram Specifications

Height	18"	Floor Plate	3/8"
Ram Penetration	5"	Side Plate	1/4"
Face Plate	3/8"	Hopper Plate	1/4"
Base Plate	3/8"		
Top Plate	3/8"		
Side Plate	1/4"		

## Hydraulic Specifications

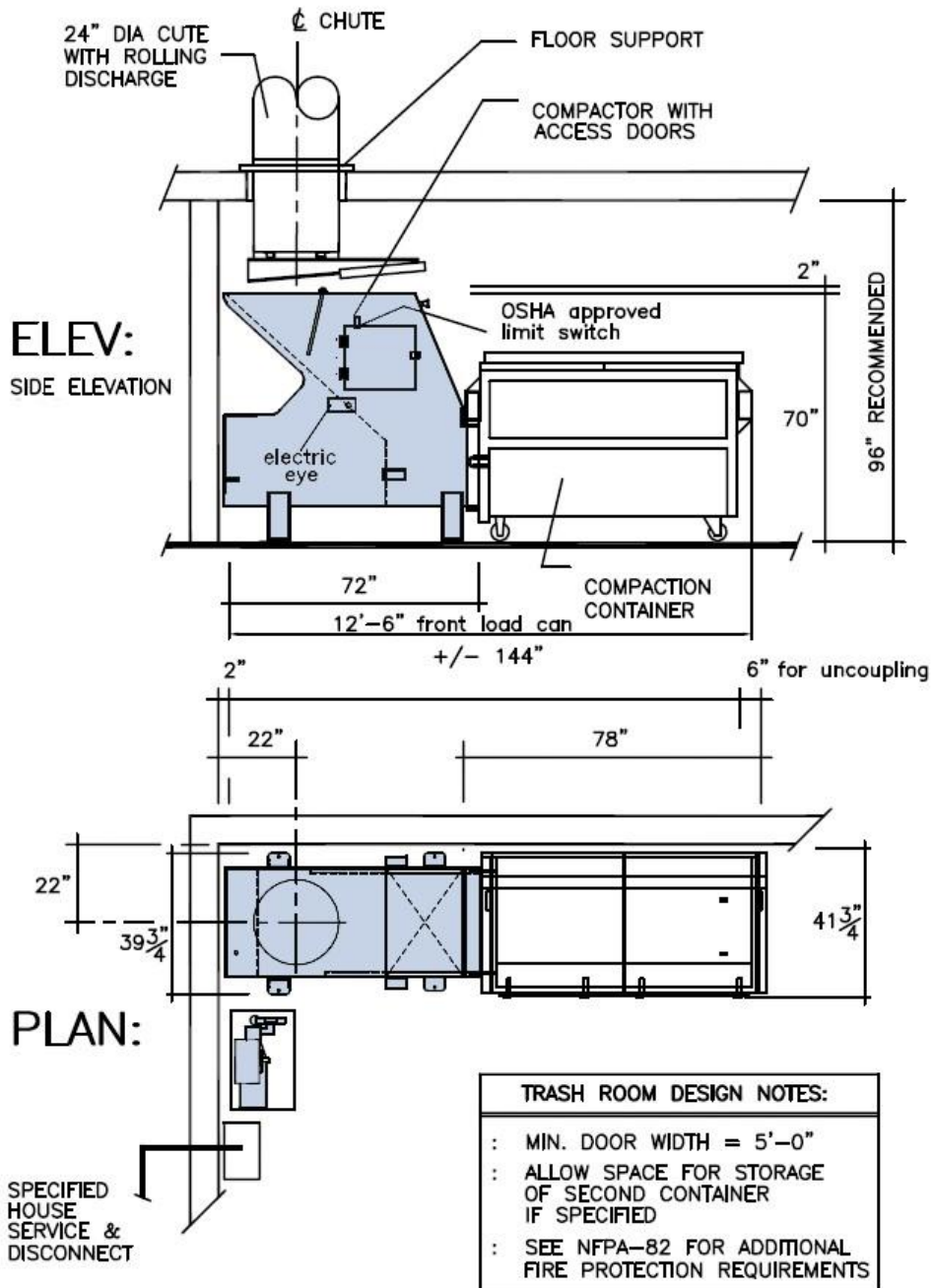
Pump	3 GPM
Cycle Time	30 seconds
Oil Tank	10 gal
Normal Pressure	2100 PSI
Relief Pressure	2200 PSI
Rated Pressure	3000 PSI
Hydraulic Cylinders	4"bore 2"rod 30"stroke

## Electrical Specifications

Motor	5 HP, 1725 RPM
Motor Power	208/220/416/440V, 3Ph, 60 Hz/50 Hz
Circuits	115 VAC, 24VDC
Monitors	80% & 100% full



# 02-Compactor



## 03-Construction Chute

### 03-Construction Chute

Construction chutes are temporary installations used to remove rubble, debris, and similar demolition and construction waste materials safely from taller buildings without affecting loads on the structure. They are required to have a smooth, open shaft without offsets, bends or interior protrusions and are used in multistory buildings to convey construction waste from upper floors to a collection point.

Our chutes are made of HDPE plastic and added with UV resistant material, which can be used outdoors for a long time, and our products can be used in extremely cold weather.

We manufacture the chute section by injection mold, wall thickness uniform, small deformation, wear resistance and impact resistance.

At the same time, we can also customize chutes of different thicknesses and diameters according to your requirements, and design different solutions for you according to your site conditions

It can be used in a multitude of industries and situations.



The components of chute includes:

- Regular Chute
- Door Chute (Hopper Chute)
- Chain Assembly
- Supporting Bracket
- Pulling hoist system(Fishing Pole)
- Steel Liner
- Dust Cover

## 03-Construction Chute

### Chute Specification

We manufacture the chute section by injection mold, wall thickness uniform, small deformation, wear resistance and impact resistance.

At the same time, we can also customize chutes of different thicknesses and diameters according to your requirements, and design different solutions for you according to your site conditions.

To give an unimpeded free flow of debris within a chute and a more impact-resistant and a more wear-resistant, the best shape has proved to be circular, therefore have a circular cross section. We will make square section chutes per special requirements.

Our injection mold chutes and customized chute specification listed as below:

SPEC.	Typical Size	Customized	Remark
TOP DIA.	580mm	500-1200mm	Usually , we customize the below size: <ul style="list-style-type: none"> <li>● 18"=450mm</li> <li>● 20"=500mm</li> <li>● 24"=600mm</li> <li>● 28"=700mm</li> <li>● 30"=750mm</li> <li>● 32"=800mm</li> <li>● 36"=900mm</li> <li>● 40"=1000mm</li> </ul> The thickness of 5mm, 7mm, 10mm is more popular.
BOTTOM DIA.	430mm	400-1100mm	
LENGTH	1265mm	Any Length	
THICKNESS	5mm	5-10mm	
COLOR	Yellow	Any Color	
WEIGHT	10kgs	Customized	

Chutes are available in various diameters; we will also manufacture per customer's drawings and customers special requirements.

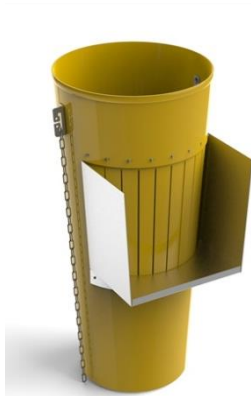
## Chute System's Components

### ▼ REGULAR CHUTE



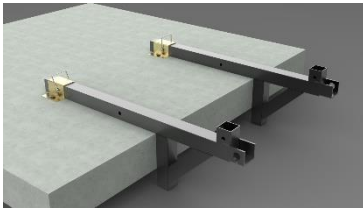
- New HDPE material.
- With two connectors that look like ears
- Two chains, Mn20 steel material.
- A chute consists mainly of these sections

### ▼ DOOR CHUTE(Hopper Chute)



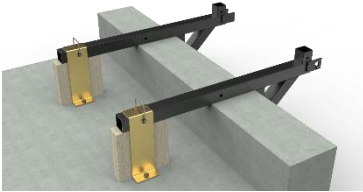
- New HDPE material.
- With two connectors that look like ears
- Two chains, Mn20 steel material, which can adjust working length of chute section.
- Entries for multi-level work
- Sputtering guard curtain, to stop the debris from popping out.

## ▼ SUPPORTING BRACKET



### Supporting Frame for Flat Floor

- Q235 steel material (US standard A36)
- 40\*40mm square tube, 2.5mm wall thickness.
- Paint coating to rust proof.
- Working load is less than 500kgs.
- Reusable.



### Supporting Frame for Parapet

- Q235 steel material (US standard A36)
- 40\*40mm square tube, 2.5mm wall thickness.
- Paint coating to rust proof.
- Working load is less than 500kgs.
- Reusable



### Supporting Frame for Window

- Q235 steel material (US standard A36)
- 40\*40mm square tube, 2.5mm wall thickness.
- Paint coating to rust proof.
- Working load is less than 500kgs.
- Reusable



## 03-Construction Chute



### Supporting Frame for Scaffolding

- Q235 steel material (US standard A36)
- 50\*50mm square tube, 2.5mm wall thickness.
- Paint coating to rust proof.
- Working load is less than 500kgs.
- Reusable

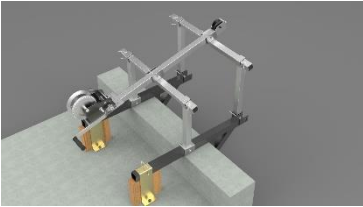


### Adjustable Supporting Frame for Window

- Q235 steel material (US standard A36)
- 50\*50mm square tube, 2.5mm wall thickness.
- Paint coating to rust proof.
- Wall thickness from 220mm to 430mm.
- Working load is less than 500kgs.
- Reusable

## 03-Construction Chute

### ▼ Pulling Hoist System



- Q235 steel material (US standard A36)
- 40\*40mm square tube, 2.5mm wall thickness.
- Paint coating to rust proof.
- Working load is less than 1100kgs.
- Hoisting height is 20meter
- Easy to assemble and dismantle.
- Reusable
- Suitable for flat floor bracket, parapet bracket, window bracket.

## 03-Construction Chute

### ▼ DOOR CHUTE(Hopper Chute)



A full steel liner can be cladded inside the chute section, which can make chute section more impact-resistant and more wear-resistant.

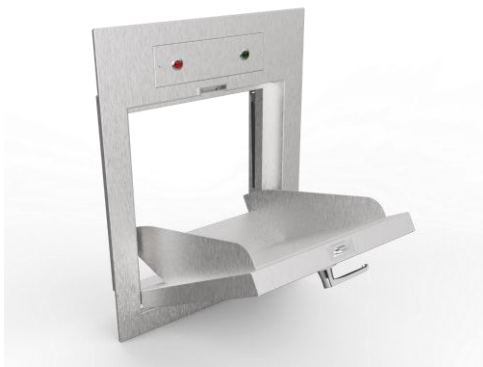
- Gal. steel material.
- 1.5mm thickness, or can be customized per customer's request.

## 04-Accessories

### 04-Accessories

We can manufacture and supply most of accessories related to garbage chute and laundry chute. Our accessories can suit your different quality requirements, different national standards. Now we have provided various accessories to dozens of chute manufacturers, helping them reduce the cost and improve the quality.

And we also promise that customers can get the same uniform parts within ten years from us, so as to ensure the continuity of their after-sales service to their chutes system.



[Intake Door \(Bottom Hinged\)](#)



[Intake Door \(Side Hinged\)](#)



[Chute Section](#)



[L-handle with CH751 Key](#)



[T-handle with CH751 Key](#)

## 04-Accessories



[Thumb Trigger](#)



[Pulling Handle SS Material](#)



[Ox Horn Handle SS Material](#)



[Square Latch Stainless Steel Material](#)



[Tubular Latch](#)



[Bi/Tri-Sorter Door](#)



[Bi/Tri-Sorter](#)



## 04-Accessories



Compactor

More accessories, please contact us for more information.

## Why Choose Us



"You define the **PERFECT CHOICE;**  
Expert Design & High Quality is the most important  
advantages you can rely on us..."

- -----We are professionals; have many years of successful experience in global market.
- ----- Concentration, Persistence is our biggest interpretation of the product.
- -----We provide professional technical advice on your early design phase.
- -----We have an experienced design team to track your needs throughout the process.
- -----We are excellent craftsman who have ten years of workshop experience.
- -----Our products fully comply with NFPA standards, and we have passed ISO9001 certification and UL-10B fire-rated test.
- -----We work 24/7 and we are always available to assist you at your convenient time.
- -----We promise that spare parts in our warehouse will be available within 10 years.

# Our Certificates



## Our Contact

**Qingdao Chute Equipment Co., Ltd**

Qingdao City, China

Tel: +86 13356856582(WhatsApp, WeChat)

Email: [sales@qdchute.com](mailto:sales@qdchute.com)

Website: [www.qdchute.com](http://www.qdchute.com)